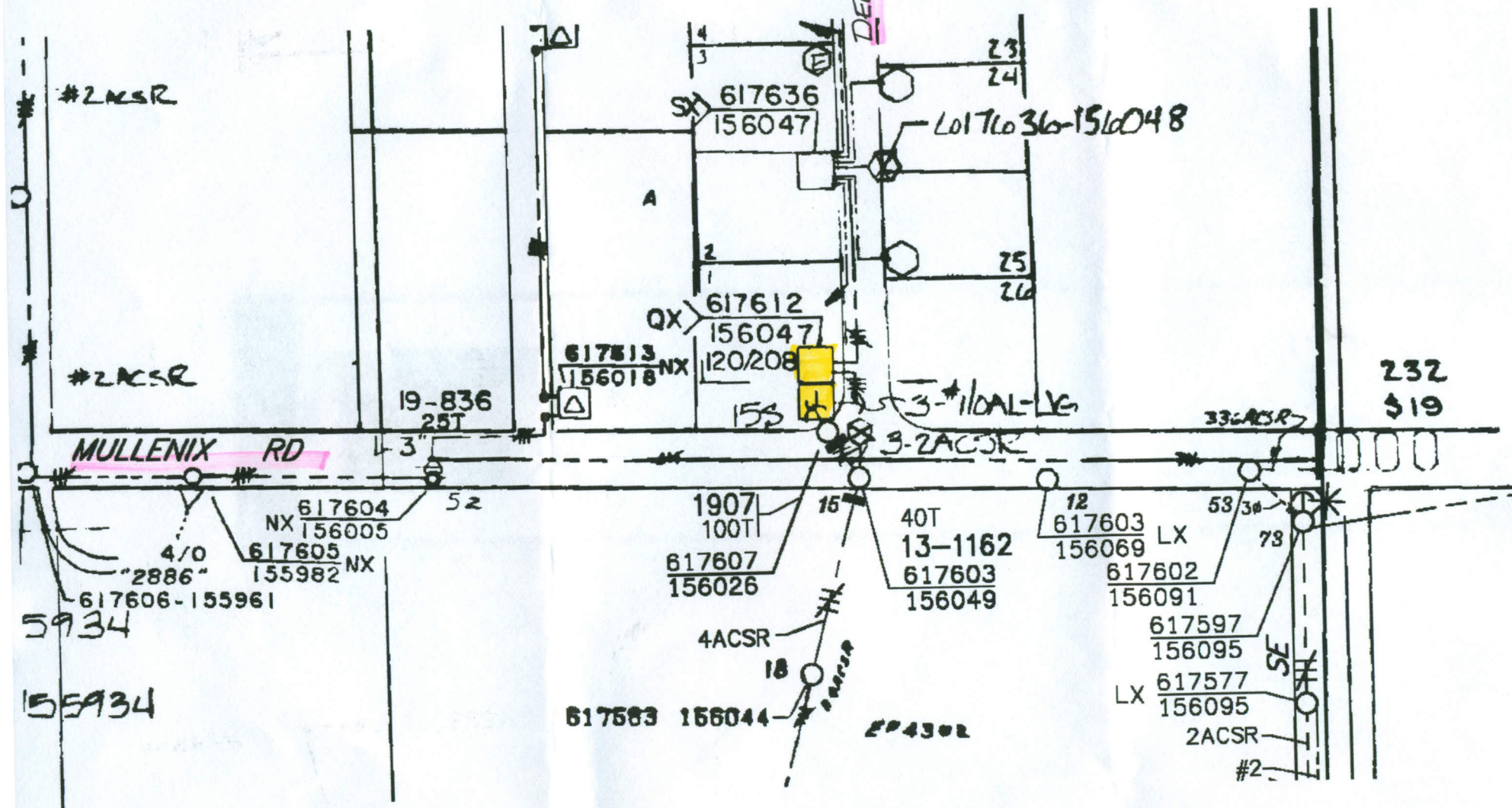
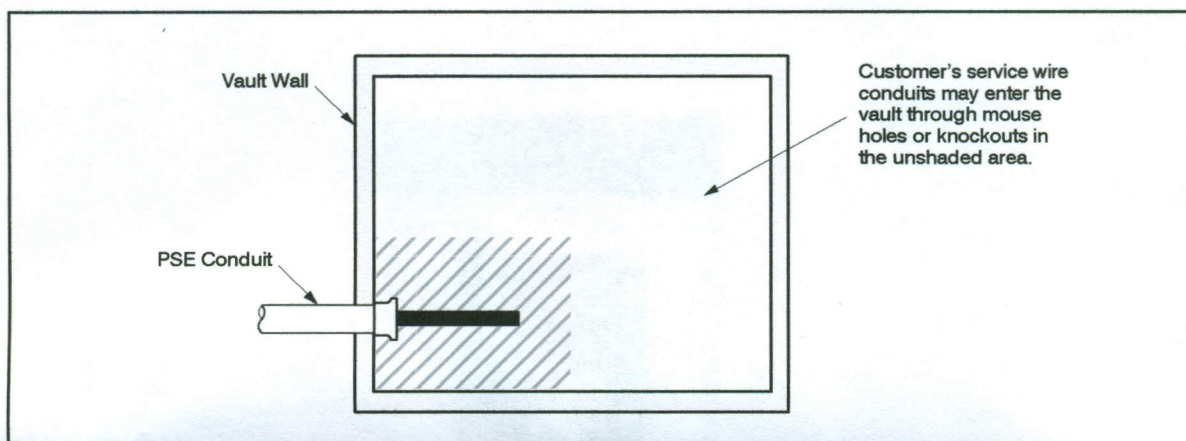


This map not to be relied upon for  
exact location of facilities. Call  
One-Call for underground locator  
assistance. 1-800-424-5555.



This map not to be relied upon for  
exact location of facilities. Call  
One-Call for underground locator  
assistance. 1-800-424-5555.





**Figure 22** Location of customer conduit in PSE vaults

### Vault location and access

Underground equipment must be readily accessible by workers and equipment during construction and for future operation and maintenance. Workers should not have to climb over or remove obstacles to gain access. Heavy construction equipment must be able to get close enough to the excavation to place the vault in the hole. Consider the underground equipment's weight and the lifting angle and swinging radius of the boom truck when choosing the underground equipment's location. Remember that dump trucks may need access if select fill is used for fill or if excavated material will be hauled away.

A clear and level working space is necessary for the operation and maintenance of Underground Equipment. The location must allow room to operate a switch handle, completely open a hinged steel door, or use a hotstick to install and operate equipment. In no case shall clearances be less than those required by code from combustible and noncombustible walls, bodies of water, fire escapes, etc.

The working space should be free from obstructions such as trees, shrubbery, poles, buildings, retaining walls, structures, fences, fire hydrants, decorative screens, ditches, streams, roadways, etc. Consider possible future structures and equipment which could interfere with clearances and accessibility.

## LANDSCAPING SUGGESTIONS

We need room to work safely on this device. Please Keep shrubs and structures 10 feet

away from front side and 3 feet from other sides.

Obstructions will cause delays when restoring electric service.

**CALL BEFORE DIGGING**  
**1-800-424-5555**

